

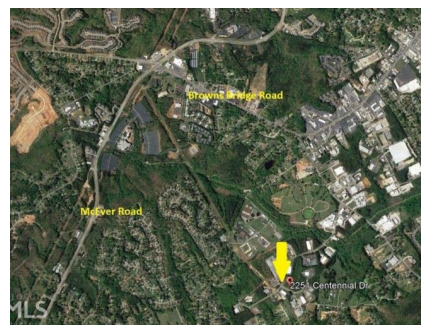
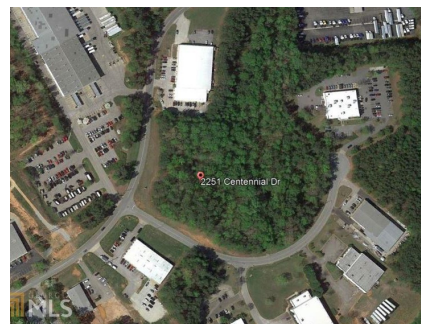
2251 Centennial Dr
Gainesville, GA 30504



BERKSHIRE HATHAWAY
HomeServices
Georgia Properties

Powered by **northgeorgiahomehub.com**

MLS# 850949



\$150,000

Assessed at \$242,000 - Asking \$150,000! This 3.7 acre lot is on the corner of Centennial Dr. and Centennial Circle offering prime visibility/accessibility. In addition, the lot next to this is also available for sale so that there is over 6+ acres of property that could be purchased (sewer line between them). The Centennial Industrial Park offers protective covenants (see attached) and also offers low taxes as the park is accessed taxes only by Hall County although all utilities are offered! Centennial Industrial Park is unique in that it has all utilities yet is not in the Gainesville City Limits. This location offers easy accessibility to I-985 and Gainesville market



Brent Hoffman

PHONE

770-536-3007

CELL

770-533-6721